

ITEM # WCSQSET

ITEM # WCRDSET

Rolling Wood Caddie Assembly Instructions

⚠WARNING Do Not Exceed Max Weight Capacity: 110 lbs



SQUARE



ROUND

READ ALL INSTRUCTIONS AND WARNINGS BEFORE USING THIS PRODUCT.

This manual provides important information on proper operation & maintenance. Every effort has been made to ensure the accuracy of this manual. These instructions are not meant to cover every possible condition and situation that may occur. We reserve the right to change this product at any time without prior notice.

IF THERE IS ANY QUESTION ABOUT A CONDITION BEING SAFE OR UNSAFE, DO NOT USE THIS PRODUCT!

QUESTIONS? PROBLEMS? CONTACT CUSTOMER SERVICE.

If you experience a problem, have questions or need parts for this product, visit our website <http://www.buffalotools.com> or call Customer Service at 1-636-532-9888, Monday-Friday, 8 AM - 4 PM Central Time, or email : info@buffalotools.com. A copy of the sales receipt is required.

KEEP THIS MANUAL, SALES RECEIPT & APPLICABLE WARRANTY FOR FUTURE REFERENCE.

ITEM # WCSQSET

ITEM # WCRDSET

Rolling Wood Caddie Assembly Instructions

⚠WARNING Do Not Exceed Max Weight Capacity: 110 lbs

REVIEW CONTENTS BEFORE ASSEMBLY



1 Piece Frame
(Square or Round)

1 Piece
Hex Wrench



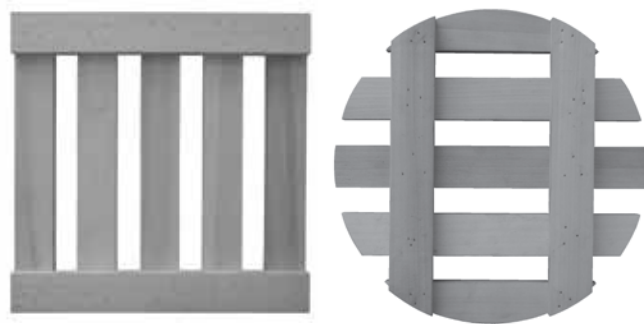
16 Pieces
Bolts



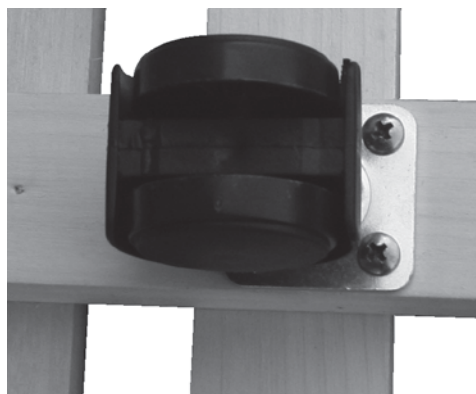
2 Pieces
Casters



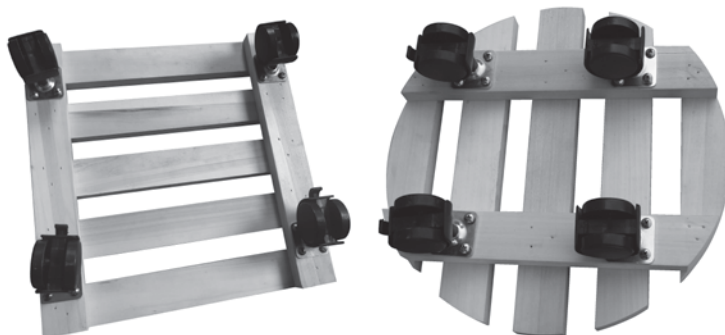
2 Pieces
Locking Casters



**A TURN THE FRAME UPSIDE DOWN
ON A SMOOTH FLAT SURFACE**



**B POSITION THE CASTER AT CORNER.
USE HEX WRENCH AND ATTACH WITH
SCREWS. DO NOT COMPLETELY TIGHTEN
UNTIL THE UNIT IS FULLY ASSEMBLED.**



**C ONCE ALL 4 CASTERS HAVE
BEEN ATTACHED AT EACH
CORNER, YOU CAN SECURELY
TIGHTEN ALL SCREWS BEFORE USE.**