

# ITEM # AFPR3814

## 3/8 in. Filter Regulator Lubricator

### 3-in-1 Combo with Gauge

### Instruction Manual

#### READ ALL INSTRUCTIONS AND WARNINGS BEFORE USING THIS PRODUCT.

This manual provides important information on proper operation & maintenance. Every effort has been made to ensure the accuracy of this manual. These instructions are not meant to cover every possible condition and situation that may occur. We reserve the right to change this product at any time without prior notice.

#### IF THERE IS ANY QUESTION ABOUT A CONDITION BEING SAFE OR UNSAFE, DO NOT OPERATE THIS PRODUCT!

#### Questions? Problems? Call Customer Service.

If you experience a problem, have questions or need parts for this product, call Customer Service at 1-636-532-9888, Monday-Friday, 8 AM - 4 PM Central Time. A copy of the sales receipt is required.

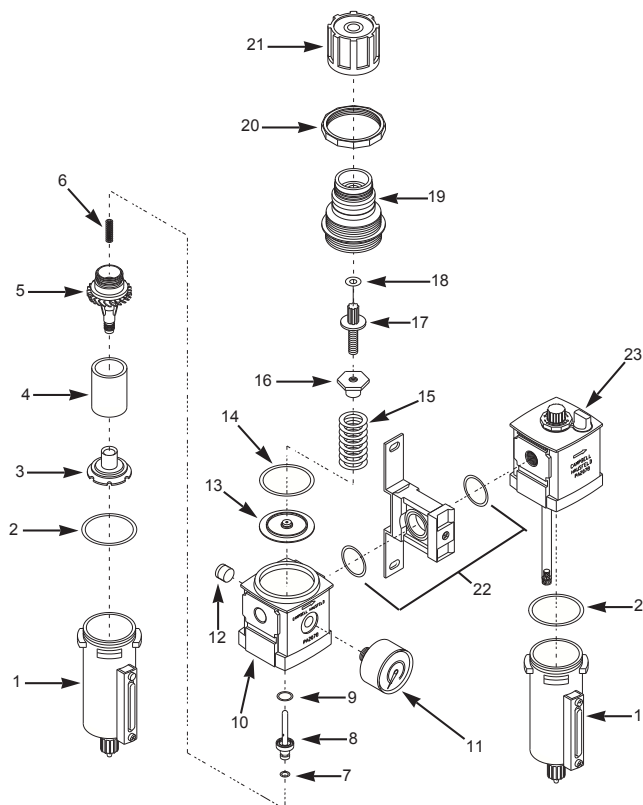
#### FOR CONSUMER USE ONLY – NOT FOR PROFESSIONAL USE.

#### KEEP THIS MANUAL, SALES RECEIPT & APPLICABLE WARRANTY FOR FUTURE REFERENCE.

<b>Specifications</b>	Maximum Input Pressure 116 PSI	Max. Temp 175°	Air Flow 80 SCFM @90 PSI
-----------------------	--------------------------------	----------------	--------------------------

#### Replacement Parts List

Ref. No.	Description	Part Number	Qty.
1	Metal bowl with sight gauge	--	2
2	O-ring (Bowl)	--	2
3	Filter element base	--	1
4	Filter element	PA1165000	1
5	Baffle	--	1
6	Valve spring	--	1
7	O-ring (Valve stem)	--	1
8	Valve stem	--	1
9	O-ring (Valve stem)	--	1
10	Filter/regulator body & cover	--	1
11	Gauge	SV899600AV	1
12	Plug - 1/4" NPT	SV995500AV	1
13	Diaphragm assembly	--	1
14	Slip ring	--	1
15	Main spring	--	1
16	Adjusting screw assembly nut	--	1
17	Adjusting screw	--	1
18	Thrust washer	--	1
19	Bonnet	--	1
20	Panel nut	--	1
21	Knob	--	1
22	T-Bracket with joiner set	SV995200AV	1
23	Lubricator body and cover	--	1



## READ ALL INSTRUCTIONS AND WARNINGS BEFORE USING THIS PRODUCT.

1. When installing the gauge, use sealant tape on all threads.
2. When removing the plug, use sealant tape on the threads then re-install.
3. Mount the filter /regulator / lubricator in a vertical position as close as possible to air tool connection. NOTE: The inlet port is marked with an arrow on the body to indicate the air flow direction.
4. Install the unit with the same pipe size as the piping in use. Avoid using unnecessary fittings, couplings, etc., that restrict airflow.
5. Connect the air supply to the inlet port.

### OPERATION

1. Fill the lubricator bowl with clean, non detergent SAE 10 oil.
2. Before pressurizing system, make certain the bowls are securely locked in place by pushing the bowls into filter body and lubricator body and turning clockwise to lock.
3. Unlock the regulator adjusting knob by pulling knob away from the regulator.
4. Turn the regulator adjusting knob counterclockwise until no load is on the regulating spring.
5. Turn on the air pressure supply and turn the adjusting knob clockwise until the desired outlet pressure is reached. Push the regulator adjusting knob toward the regulator to lock in desired pressure.
6. The oil flow is controlled by the clear adjusting knob. Turn knob counter-clockwise for more or clockwise for less oil delivery. The oil delivery rate automatically adjusts with changes in air flow.
7. Refill the lubricator while the system is under pressure. Remove relief plug to allow relief of air pressure. When the relief plug is removed, the bowl can also be removed. Pour oil into the bowl and replace. Replace fill plug before resuming operation. Do NOT replace the relief plug until the bowl is securely locked in place.

### MAINTENANCE

1. Inspect and replace cracked, damaged or deteriorated seals and bowls. Wipe bowls with a soft, dry cloth to clean.
2. Replace or clean filter element periodically. Remove the filter element and tap filter on a hard surface or use an air gun to blow out residual dirt.
3. Drain bowls at least once per work shift. To avoid spray or splatter, cover bottom of filter with a cloth and turn the manual drain counterclockwise.
4. Before placing the unit in service, make sure the bowl is reinstalled and securely locked in place.

### PRESSURE REGULATOR

The regulator can be disassembled for servicing without removal from the line.

1. Shut-off air to the filter, regulator and lubricator (F/R/L) and release all pressure from the system on both sides of the F/R/L.
2. Turn adjusting knob counterclockwise to relieve compression on spring.
3. Turn entire knob assembly counterclockwise to remove.
4. Remove the diaphragm assembly.
5. By removing the filter assembly and spring, the valve stem is removable from the bottom of the regulator.

### LUBRICATOR

1. In clean operating conditions, this unit is generally trouble-free. Contaminants may collect on the inlet filter. To clean filter, tap on a hard surface and use an air gun to blow off residual dirt.
2. Before placing the unit in service, make sure the bowl is reinstalled and securely locked in place.

## Questions? Problems? Call Customer Service.

If you experience a problem, have questions or need parts for this product, call Customer Service at **1-636-532-9888, Monday-Friday, 8 AM - 4 PM Central Time**. A copy of the sales receipt is required.

