

PS07425

42 Piece Rotary Tool Kit



READ ALL INSTRUCTIONS AND WARNINGS BEFORE USING THIS PRODUCT.

This manual provides important information on proper operation & maintenance. Every effort has been made to ensure the accuracy of this manual. These instructions are not meant to cover every possible condition and situation that may occur. We reserve the right to change this product at any time without prior notice.

IF THERE IS ANY QUESTION ABOUT A CONDITION BEING SAFE OR UNSAFE, DO NOT OPERATE THIS PRODUCT!

HAVE QUESTIONS OR PROBLEMS? DO NOT RETURN THIS PRODUCT TO THE RETAILER - CONTACT CUSTOMER SERVICE.

If you experience a problem or need parts for this product, visit our website <http://www.buffalotools.com> or call our customer help line at **1-888-287-6981, Monday-Friday, 8 AM - 4 PM Central Time**. A copy of the sales receipt is required.

FOR CONSUMER USE ONLY – NOT FOR PROFESSIONAL USE.

KEEP THIS MANUAL, SALES RECEIPT & APPLICABLE WARRANTY FOR FUTURE REFERENCE.

⚠ WARNING

Keep your work area clean and well lit. Cluttered work benches and dark work areas may cause accidents or injury.

Keep bystanders, children and visitors away while operating a power tool. Distractions can cause you to lose control.

⚠ CAUTION

Use clamps or other practical ways to secure and support the workpiece to a stable platform. Holding the work by hand or against your body is unstable and may lead to loss of control.

Do not force tool. Use the correct tool for your application. The correct tool will do the job better and safer at the rate for which it is designed.

Do not use the tool if the power switch does not turn it "ON" or "OFF". Any tool that cannot be controlled with the switch is dangerous and must be repaired.

Disconnect the power cord before making any adjustments, changing accessories or storing the tool. Such preventive safety measures reduce the risk of starting the tool accidentally.

Store idle tools out of reach of children and other untrained persons. Tools are dangerous in the hands of untrained users.

⚠ WARNING

Inhaling dust created as a result of construction projects could be hazardous to your health. Construction dust may contain chemicals, which are known to cause cancer, birth defects and other reproductive harm in the State of California.

These chemicals could be, but are not limited to: lead from lead based paints, crystalline silica from bricks or cement, arsenic, and chromium from chemically treated-lumber.

To reduce your risk of exposure to harmful materials: always wear a dust mask that is designed to filter out hazardous microscopic contaminants, always work in a well ventilated area, and wear other approved safety equipment.

⚠ WARNING

Keep the power cord in good condition, and replace damaged cords immediately. Do not use the cord to pull the plug from the outlet. Keep the cord away from materials and surfaces that could damage cords. The risk of electric shock increases when the power cord is damaged.

⚠ WARNING

Always use the appropriate extension cord, making sure it is rated for use with power tools. Always be sure the extension cords are in good condition, free of cuts or nicks in the insulation. If using the power tool in an outside area with an extension cord, make sure the cord is rated for outdoor use.

⚠ WARNING

Use common sense while operating this power tool.

Do not use this tool if you are:

- Feeling tired or are under the influence of alcohol or drugs.
- Wearing loose clothing or jewelry. Keep long hair pulled back and away from moving parts.
- Overreaching or have improper footing. Handling the tool in this way could cause serious injury.

When using this power tool always:

- Wear the proper safety equipment, such as safety goggles, dust masks, gloves, non-skid shoes, etc.
- Check to be sure all adjusting keys or wrenches have been removed before starting the power tool.
- **Safety glasses and ear protection must be worn during operation.**

FEATURES

- 1 Rotary Tool
- 1 42" Flexible Shaft
- 40 Popular Accessories
- Compact Lightweight Design
- Variable Speeds of 8,000 to 30,000 RPM
- Durable, Double-Insulated, Impact-Resistant Housing
- Accepts Accessories With Up To a 1/8" Shank



Assembly

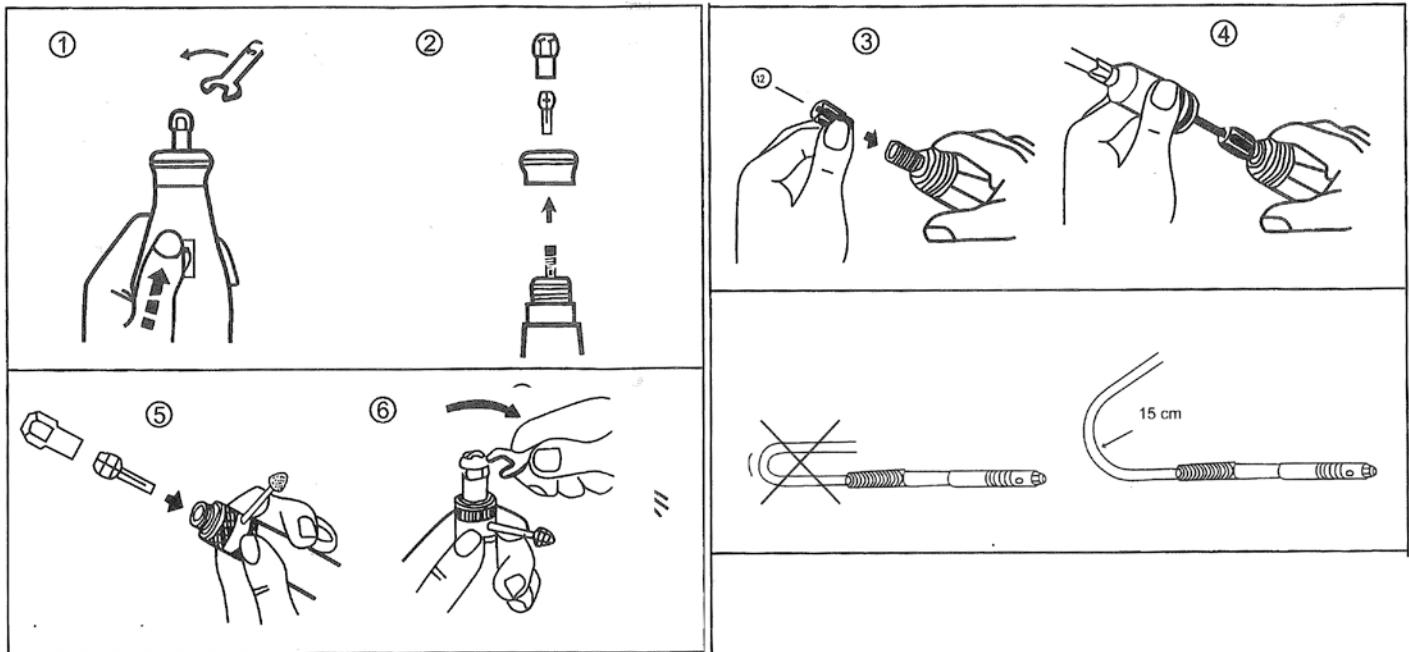
Your Rotary Tool will require some assembly prior to operation. To assist you with assembly, please refer to the following instructions.

It is important that you read the entire manual to become familiar with the unit BEFORE you use the Rotary Tool. Before assembling your Rotary Tool, be sure that you have all parts described in the Parts List.

Assemble and disassemble your Rotary Tool Set for each use. Put back all pieces in the case provided and store in the case to ensure that no pieces are lost.

- Step 1) Insert Collet (part #2) into the shaft. Slide the Collet Nut (part #2) over the Collet. Insert the accessory which best fits your working needs.
- Step 2) Press down on the Shaft Lock button (part #19) while turning the Shaft (part #3). You will feel the Shaft click into place.
- Step 3) With the Shaft locked in place, use the collet wrench to loosen the collet nut as necessary.
- Step 4) Insert the new accessory into the collet as far as possible. While pressing on the Shaft Lock, with your other hand tighten the collet nut. Do not over tighten the collet nut.

Part #	Description	Quantity	Part #	Description	Quantity
1	Collet Nut	1	13	Cord Strain Release	1
2	Collet	1	14	V-Speed PCB	1
3	Shaft	1	15	Pusher	1
4	Bearing	1	16	Switch	1
5	Bushing	1	17	Left Shell	1
6	Bearing	1	18	Nut	1
7	Coupling 2	1	19	Shaft Lock	1
8	Coupling 1	1	20	Cord	1
9	Fan	1	21	Right Shell	1
10	Motor	1	22	Self Screw	6
11	Cord Protector	1	23	Washer	8
12	Self Screw	2	24	Name Plate	1



For flex cable, unscrew nut (#18) first, and slide flex square shaft into collet (part#2) press down on the shaft lock button (part#19) tight collet nut (#1), then screw flex cable on tools

Some cutting wheels, polishing and other accessories need to be attached or inserted into another shaft or mandrel to be used. In these cases, please note the following instructions.

Step 1) Thread the accessory onto the screw. Insert the mandrel into collet. Following the preceding steps, tighten the Collet Nut.

Operation

To assist you with operation please refer to the Assembly Diagram and Parts List located below.

Never force the tool or attachment to do the work of a larger industrial tool. It is designed to do the job better and more safely at the rate for which it was intended.

Step 1) For most uses, it is helpful to grasp the tool much like a pencil. This will allow you the finest control of the tool. Before starting on your actual work piece, practice a similar action (drilling, cutting, polishing) on a scrap piece.

Note: Apply only slight pressure. Let the tool do the work.

Step 2) Setting the speed. The Rotary Tool has a switch which control speeds, from highest to lowest. This is the switch closest to the collet. The speed is set as indicated on the tool by a <, and marked as follows; LOW<HIGH.

Step 3) For most jobs, the tool can be used at the highest speed. Some materials melt at lower temperatures and should be cut at lower speed. Hard materials like iron or steel should be worked on at high speeds.

Step 4) Turning ON the tool. The Rotary Tool has an ON/OFF switch located toward the rear of the tool. ON is noted by a line, and OFF is noted by "O".