

MCDSG

Double Seat Glider Chair



⚠ WARNING!

Maximum Weight Capacity Is 400 Lbs

READ ALL INSTRUCTIONS AND WARNINGS BEFORE USING THIS PRODUCT.

This manual provides important information on proper operation & maintenance. Every effort has been made to ensure the accuracy of this manual. These instructions are not meant to cover every possible condition and situation that may occur. We reserve the right to change this product at any time without prior notice.

**IF THERE IS ANY QUESTION ABOUT A CONDITION BEING SAFE OR UNSAFE,
DO NOT OPERATE THIS PRODUCT!**

**DO NOT RETURN THIS PRODUCT TO THE RETAILER –
CONTACT CUSTOMER SERVICE.**

If you experience a problem, have questions or need parts for this product, call Customer Service at 1-888-287-6981, Monday-Friday, 8 AM - 4 PM Central Time. A copy of the sales receipt is required.

FOR CONSUMER USE ONLY – NOT FOR PROFESSIONAL USE.

KEEP THIS MANUAL, SALES RECEIPT & APPLICABLE WARRANTY FOR FUTURE REFERENCE.

⚠ WARNING

Unpack product from package and review contents. Keep all packaging until product has been reviewed. This product should be inspected prior to use to make certain all parts are intact and safe to use after assembly.

Keep the work area clean and well lit. A cluttered work area may cause accidents.

Never allow children to use this product without responsible adult supervision. When operating this product, keep children at a safe distance from the work area.

Some chemicals can damage the finish on the product. Do not use harsh chemicals such as alcohol, ammonia, gasoline, carbon tetrachloride, paint thinner, etc. to clean this product. Use soap and water.

Make sure all parts are available before assembly. Two adults may be required for assembly. During assembly, position on soft carpet or non-abrasive surface to avoid damage to the chair.

Regularly check all bolts and tighten any that are loose.

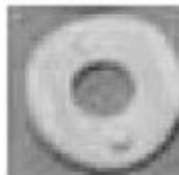
COMPONENTS



A. Acorn Nut - 16 Pieces



B. Short Screw - 10 pieces



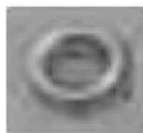
C. Plastic Spacer - 4 pieces



D. Long Screw - 19 pieces



E. Long Washer - 16 pieces



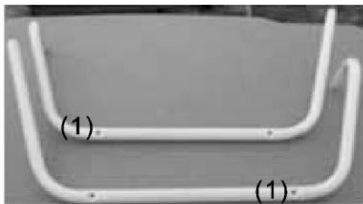
F. Lock Nuts - 29 pieces



G. Small Washer - 58 pieces



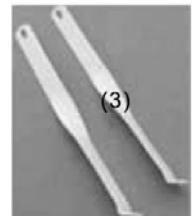
H. End Caps - 2 pieces



1) Main Frame - 2 pieces



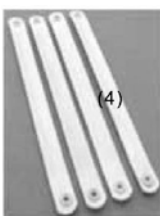
2) Straight Main Frame Crossmember



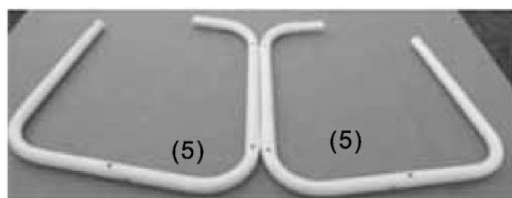
3) Side Support - 2 pieces



6) Chair Frame Crossmember



4) Swing Arms - 4 pieces



5) Chair Frame Arm

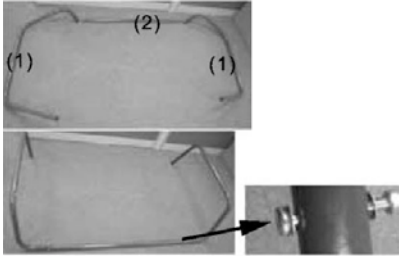


7) Chair Back

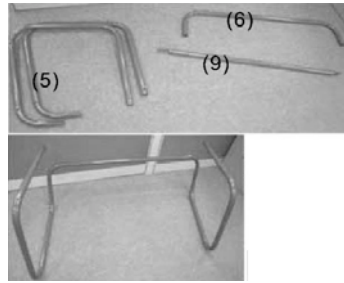


8) Chair Seat

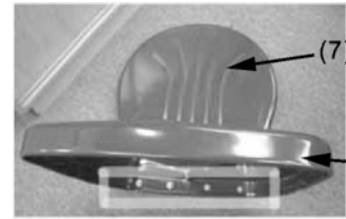
ASSEMBLY



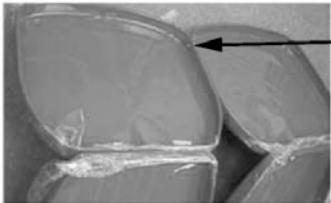
1) Connect main frame & crossmember #1 & #2. insert the End Cap (H). Use Long Screw + Small Washer + Frame + Small Screw + Nut



2) Connect chair frame and crossmember #5 & #6 by firmly pressing the kinked end into the open end.



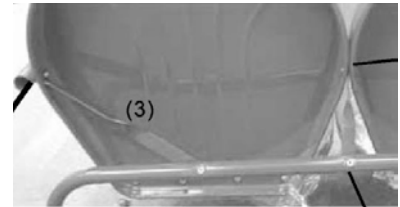
Connect chair back and seat with Small screw + Big Washer + #7 & #8 + Big Washer + Nut



Connect seat hardware with Small Screw + Big Washer + Seat + Big Washer + Nut



Place the seats inside the frame.



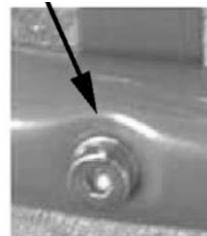
Assemble by using the hardware Small Screw + Big Washer + Frame + Big Washer + Nut



Long Screw + Small Washer + Frame + Spacer + Seat + Side Support + Small Washer + Nut



Add hardware Long Screw + Small Washer + Frame + Side Support + Small Washer + Nut



Assemble Long Screw + Small Washer + Frame + Small Washer + Nut



Assemble Seat & Chair frame with Long Screw + Small Washer + Frame + Spacer + Small Washer + Nut



Place side support between two frames. Use hardware Long Screw + Small Washer + Frame + Big Washer + Support + Big Washer Spacer + Nut + Acorn Nut



Put chair frame and seat inside the main frame.



REVIEW ALL WARNINGS ON BACK PAGE

GENERAL PRODUCT SPECIFICATIONS

FEATURES

- Seats Up to 2 People
- Provides Gentle, Relaxing Rocking Motion

SPECIFICATIONS

- Measures 48 3/4" x 33 1/4" x 31 3/4"
- Powder-Coated Steel Resists Rust
- Max Weight Capacity is 400 lbs

IMPORTANT SAFETY RULES

COMMON SENSE AND CAUTION ARE FACTORS WHICH CANNOT BE BUILT INTO ANY PRODUCT. THESE FACTORS MUST BE SUPPLIED BY THE OPERATOR.

WARNING

Keep the work area clean and well lit during assembly. A cluttered work area may cause accidents.

Never allow children to use this product without responsible adult supervision.

WARNING

For your own safety, use only parts made for this Glider Chair. Do not modify or change the assembly from its original design.

WARNING

Maximum weight capacity is 400 pounds.

Inspect the unit carefully before use. Do not use the Glider Chair if any component is loose or damaged.

Use on a flat, level surface.