

ITEM # HCDTSET36

TABLE ASSEMBLY

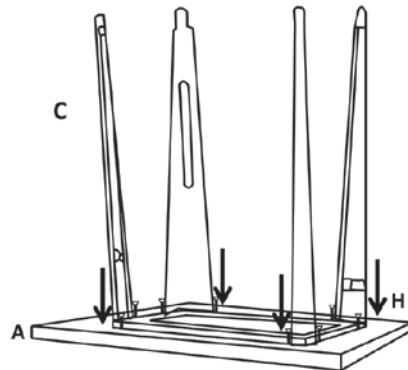
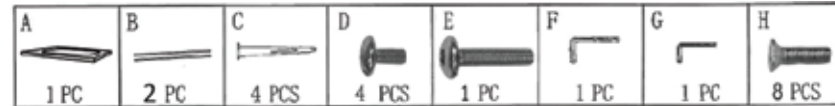
(ITEM # SWT36 / ITEM # STBB80)

Identify and locate all hardware & components listed.

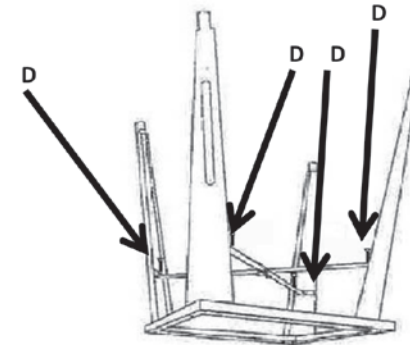
HARDWARE & COMPONENTS

#A) TOP	1 PIECE	#E) HEX BOLT	1 PIECE
#B) X-SUPPORT	2 PIECES	#F) HEX KEY	1 PIECE
#C) TABLE LEGS	4 PIECES	#G) HEX KEY	4 PIECES
#D) HEX SCREWS	4 PIECES	#H) HEX BOLTS	8 PIECES

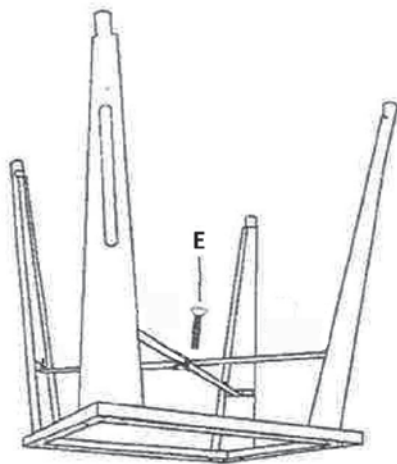
WEIGHT CAPACITY
TABLE : 330 LBS



- 1) Place table top (ITEM # SWT36) on smooth flat surface. Protect the top from scratches. Attach each Table Leg (C) to Table Top (A) using 8 pieces screws (H).



- 2) Attach X-Support (B) to each Table Leg (C) using 4 screws (D).



- 3) Attach X-support (B) using 1 piece small screws (E).



- 4) When all pieces are attached, tighten each screw securely.

Call Customer Service 636-532-9888 if parts are missing. Do not exceed maximum weight capacity

PAGE 1 OF 2

ITEM # HCDTSET36

CHAIR ASSEMBLY

(ITEM # DCBNT4 / ITEM # SWTCS2)

Identify all components before assembly.



CHAIR



SEAT



SCREWS

COMPONENTS FOR EACH CHAIR

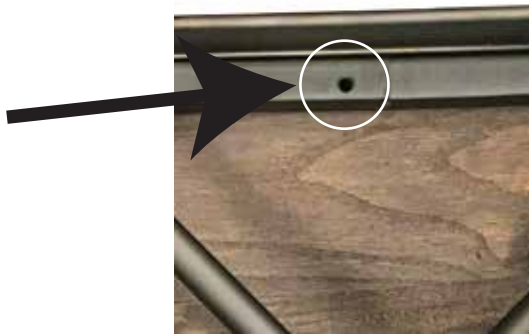
#1)	CHAIR	1 PIECE
#2)	WOOD SEAT	1 PIECE
#3)	SCREWS	14 PIECES

WEIGHT CAPACITY

CHAIR : 330 LBS

- 1) Locate chair, seat and pack of 14 screws. You will need a Phillips screwdriver or a drill with a Phillips drill bit.

- 2) Turn chair upside down and position wood seat.



- 3) Loosely attach all screws. When all 14 screws have been attached and seat is secure, tighten all remaining screws.



- 4) Repeat assembly for remaining chairs.