

**GEN2000 i**  
**2,000 MAX WATTS INVERTER GENERATOR**  
**INSTRUCTION MANUAL**



**READ ALL INSTRUCTIONS AND WARNINGS BEFORE USING THIS PRODUCT.**

This manual provides important information on proper operation & maintenance. Every effort has been made to ensure the accuracy of this manual. These instructions are not meant to cover every possible condition and situation that may occur. We reserve the right to change this product at any time without prior notice.

**IF THERE IS ANY QUESTION ABOUT A CONDITION BEING SAFE OR UNSAFE, DO NOT OPERATE THIS PRODUCT!**

**DO NOT RETURN THIS GENERATOR TO THE RETAILER!**

If you experience a problem, have questions or need parts for this product, call Customer Service at  
**1-866-460-9436, Monday-Friday, 8 AM - 4 PM Central Time.** A copy of the sales receipt is required.

**FOR CONSUMER USE ONLY – NOT FOR PROFESSIONAL USE.**

**KEEP THIS MANUAL, SALES RECEIPT & APPLICABLE WARRANTY FOR FUTURE REFERENCE.**

**CALIFORNIA PROPOSITION 65**

**WARNING:** This product, or the exhaust from this generator, may contain chemicals, including lead, known to the State of California to cause cancer and birth defects or other reproductive harm. Wash hands after handling.

**2 YEAR LIMITED EMISSION-RELATED WARRANTY**

THIS ENGINE MEETS U.S. EPA EMISSION STANDARDS UNDER 40 CFR 1054.625. The emission-related limited warranty is valid for two (2) years. Keep the purchase receipt and mail in the product registration card for proof of purchase. Buffalo Corp limits emission-related warranty repairs to authorized service centers for owners located within 100 miles of an authorized service center. For owners located more than 100 miles from an authorized service center, Buffalo Corp will, in its sole discretion, either pay for shipping costs to and from an authorized service center, provide for a service technician to come to the owner to make the warranty repair, or pay for the repair to be made at a local non-authorized service center. The provisions of this paragraph apply only for the contiguous states, excluding the states with high-altitude areas identified in 40 CFR part 1068, Appendix III.

To exercise this warranty, DO NOT RETURN TO RETAILER. Instead, call Customer Service toll free at 1-866-460-9436 (email address [info@buffalotools.com](mailto:info@buffalotools.com)) and you will be instructed on where to take the engine for warranty service. Take the generator and proof of purchase (your receipt) to the repair facility recommended by the Customer Service Representative. The warranty does not extend to generators damaged or affected by fuel contamination, accidents, neglect, misuse, unauthorized alterations, use in an application for which the product was not designed and any other modifications or abuse.

**1 YEAR LIMITED WARRANTY (30 Day Limited Warranty for Commercial and Rental Purpose)**

Generators are warranted to be free from defects in materials and workmanship for a period of 1 YEAR from date of original purchase. Buffalo Corp. is not liable for any indirect, incidental or consequential damages from the sale or use of this product. Any implied warranties are limited to 1 YEAR as stated, or as otherwise stated, in this written limited warranty. Some states do not allow the exclusion or limitation of incidental or consequential damages. Some states do not allow limitation on the length of an implied warranty. Buffalo Corp will repair or replace, at its discretion, any part that is proven to be defective in materials or workmanship under normal use during the 1 YEAR warranty period. Warranty repairs or replacements will be made without charge for parts or labor. Parts replaced during warranty repairs will be considered as part of the original product and will have the same warranty period as the original product. This warranty gives you specific legal rights, and you may have other rights that vary state to state.

### Notice Regarding Emissions:

Engines certified to comply with California and U.S. EPA emission regulations for SORE (Small Off Road Equipment) are certified to operate on regular unleaded gasoline and may include the following emission control systems: Three-Way Catalyst (TWC) (if equipped), and Engine Modifications (EM).

### Legal Requirements:

Federal and/or State Occupational Safety and Health Administration (OSHA) regulations, local codes, and/or ordinances may apply to the intended use of this generator. Consult a qualified electrician, electrical inspector, and/or the local agency having jurisdiction. Some areas require generators to be registered with local utility companies. Additional regulations may apply if this generator will be used at a construction site.

## IMPORTANT SAFETY INSTRUCTIONS

# STOP!

Before using this generator and if you have any questions regarding the hazard and safety notices listed in this manual and/or on this generator, call 1-866-460-9436, Monday - Friday, 8 AM - 4 PM Central Time.

### DANGER

**Carbon Monoxide Gas:** When in operation, the exhaust from this generator contains poisonous carbon monoxide gas. Carbon monoxide gas is both odorless and colorless AND may be present even if you do not see or smell gas. Breathing this poison gas can lead to headaches, dizziness, drowsiness, loss of consciousness and eventually death.

- USE THIS GENERATOR ONLY OUTDOORS IN NON-CONFINED AREAS. DO NOT SECURE THE GENERATOR WITH A CHAIN OR ROPE, AS THIS WILL MAKE IT DIFFICULT TO MOVE IN AN EMERGENCY.
- Keep at least several feet of clearance on all sides to allow proper ventilation for this generator.

### WARNING

**Chemicals:** According to the State of California, the exhaust from this generator contains chemicals known to cause cancer, birth defects, or other reproductive harm.

**⚠ WARNING**

**Flammable Gasoline:** This generator may emit highly flammable and explosive gasoline vapors, which can cause severe burns or even death. A nearby open flame can lead to an explosion even if not directly in contact with gasoline.

- Do not operate this generator near open flame.
- Do not smoke near this generator.
- Always operate this generator on a firm, level surface.

**Gasoline is highly flammable and explosive. Handling fuel can result in serious injury or burns.**

- Always shut down this generator before refueling. Refuel in a well-ventilated area. Keep heat, sparks and flame away while refueling and away from the location where gasoline is stored. Never refuel indoors where gasoline fumes may reach flames and/or sparks.
- Allow this generator to cool for at least 2 minutes before removing the fuel tank cap. Loosen the cap slowly to relieve pressure in the fuel tank. Avoid spilling fuel.
- Do not fill the fuel tank above the upper limit line. Gasoline may expand during operation. Do not fill to the top of the tank.
- Always check for spilled gasoline and immediately wipe it up before starting this generator.
- Empty the fuel tank before storing or transporting this generator.
- Always handle fuel outdoors.
- Before transporting, turn the fuel valve to the “OFF” position and disconnect the spark plug.

NOTE: DO NOT USE GASOLINE CONTAINING MORE THAN 10% ETHANOL (e10)

**⚠ WARNING**

**Usage:** Consult a physician(s) before using this generator if using a pacemaker. Electromagnetic fields in close proximity to a heart pacemaker could cause a pacemaker to malfunction or fail. Caution is necessary when near the engine's recoil starter.

**⚠ CAUTION**

**Usage:** Prolonged exposure to high noise levels can be hazardous to hearing. Always wear ANSI-approved hearing protection when operating or working around the generator when it is running.

## **DANGER**

**Powerful Voltage:** This generator produces powerful voltage, which can result in electrocution.

- ALWAYS ground this generator before using it. (See “Ground the Generator” section in this manual).
- Only electrical devices should be plugged into this generator, either directly or with an extension cord. NEVER connect a building electrical system to this generator without a qualified electrician. *Doing so voids your warranty.* Such connections must isolate generator power from utility power and comply with local electrical laws and codes. Failure to comply can create a back feed into utility lines creating an electrocution hazard, which may result in serious injury or death to utility workers. Such a back feed may cause this generator to explode, burn and create fires when utility power is restored.
- Use a ground fault circuit interrupter (GFCI) in highly conductive areas such as metal decking or steel work. GFCIs are available in-line with some extension cords.
- Do not use this generator in wet conditions (rain, snow, active sprinkler system, wet hands, etc.). Always keep this generator dry and operate it with dry hands.
- Do not allow children or non-qualified persons to operate this generator.

## **WARNING**

*GASOLINE IS HIGHLY FLAMMABLE AND EXPLOSIVE. YOU COULD BE BURNED OR SERIOUSLY INJURED IF THE GASOLINE IS IGNITED. Before refueling, stop the engine and keep heat, sparks and flame away. Handle fuel only outdoors. Do not fill the fuel tank above the upper limit line. Wipe up spills immediately.*

## **DANGER**

**High Temperatures:** This generator produces heat when in operation. Temperatures near the exhaust can exceed 150 Degrees Fahrenheit (65 Degrees Celsius).

- Do not touch hot surfaces. Observe all warning placards on this generator denoting hot surfaces.
- Allow this generator to cool for several minutes after use before touching the engine, muffler or other areas that are hot during operation and before storing indoors.
- Hot exhaust may ignite some materials. Keep flammable materials away from this generator.
- Keep at least several feet of clearance on all sides of this generator during operation. Do not enclose this generator in any structure.

## **WARNING**

*IMPROPER CONNECTIONS TO A BUILDING CAN ALLOW ELECTRICAL CURRENT TO BACKFEED INTO UTILITY LINES, CREATING AN ELECTROCUTION HAZARD. Connections to a building must isolate generator power from utility power and comply with all applicable laws and electrical codes.*

**⚠ CAUTION**

**Usage:** Misuse of this generator can damage it or shorten its life.

- Use this generator only for its intended purpose.
- Operate this generator only on a dry, level surface. Do not secure the generator with a chain or rope, which would prevent it from being moved in an emergency.
- Allow this generator to run for several minutes before connecting any electrical devices.
- Promptly turn off any malfunctioning devices and disconnect them.
- Do not operate an excessive number of electrical devices in excess of the wattage capacity of this generator.
- Do not turn on electrical devices until *after* they are connected to this generator.
- Turn off all connected electrical devices before stopping this generator.

**⚠ CAUTION**

**Usage:** Prolonged exposure to high noise levels can be hazardous to hearing. Always wear ANSI-approved hearing protection when operating or working around the generator when it is running.

**⚠ WARNING**

**Usage:** Avoid the use of extension cords if possible. If you choose to use them, be sure they are sized adequately to handle the flow of electricity. An undersized cord can overheat, short out and cause a fire.

**Included with this Generator:**

DC connector wires for connecting 12 Volt automotive-type batteries  
Spark plug wrench  
Screwdriver



**⚠ WARNING**

**Usage:** Avoid the use of extension cords if possible. If you choose to use them, be sure they are sized adequately to handle the flow of electricity. An undersized cord can overheat, short out and cause a fire.

**⚠ WARNING**

*The engine exhaust from this product contains chemicals known to the State of California to cause cancer, birth defects or other reproductive harm.*

**⚠ DANGER**

*EXHAUST CONTAINS POISONOUS CARBON MONOXIDE GAS THAT CAN BUILD UP TO DANGEROUS LEVELS IN CLOSED AREAS. BREATHING CARBON MONOXIDE CAN CAUSE UNCONSCIOUSNESS OR DEATH. Never run the generator in a closed or even partly closed area where people may be present.*

## FEATURES:

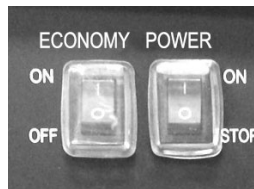
- 1.0 Gallon Fuel Tank
- 2,000 Watts Max AC output
- 4,500 RPM
- 99cc, 4 stroke
- Low oil shutdown
- Recoil Start
- Run Time : 4.5 Hours at 50% load
- Noise Level : 60db at 0%

This is a Gasoline Powered Invertor Generator that offers clean power for electronics.

### 1) ENGINE SWITCH

The engine switch controls the ignition system.

To Start generator, turn ignition switch ON. Then the engine can be started by sliding Choke lever to CHOKE then pull Recoil. Allow engine to run for a few seconds then slide the Choke Lever to RUN.



To Stop generator, press ignition circuit to STOP. The engine will not run.

### 2) ECONOMY CONTROL SWITCH

When the economy control switch is turned "ON", the economy control unit controls the engine speed according to the connected load. The results are better fuel connection and less noise. (Turn OFF when using less voltage.)

### 3) LOW OIL ALERT SENSOR

When the oil level falls below the acceptable level, the engine stops automatically. Unless you refill with oil, the engine will not start again.

### 4) OVERLOAD INDICATOR LIGHT

The overload indicator light comes on when an overload of a connected electrical device is detected, the inverter unit overheats, or the AC output voltage rises. The electronic breaker will then activate, stopping power to the generation in order to protect the generator and any connected electric devices. The output pilot light will flicker GREEN, the overload indicator light will turn RED, & the engine will stop.

- Turn off any connected electric devices and stop the engine
  - Reduce the total wattage of connected electric.
  - Check for blockages in the cooling air inlet and the control unit & restart engine.
- The generator AC output automatically resets when the engine is stopped and then restarted. The overload indicator light may come on for a few seconds at first when using electric devices that require a large starting current, such as a compressor or a submergible pump. However, this is not a malfunction.

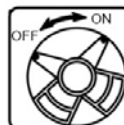
### 5) DC CIRCUIT PROTECTOR

The DC circuit protector turns off automatically when the load exceeds the generator rated output. Reduce the load to within specified generator rated output if the DC circuit protector turns off.

### 6) FUEL COCK

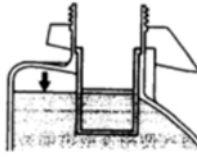
The fuel cock is used to supply fuel from the tank to the carburetor.

Turn ON when getting ready to start the generator. Turn OFF when finished using the generator.



## CHECK ENGINE FUEL

- Make sure there is sufficient fuel in the tank.
- If fuel is low, refill with unleaded automotive gasoline.
- Be sure to use the fuel filter screen on the fuel filter neck.
- Recommended fuel: Unleaded gasoline.
- Fuel tank capacity: 1.0 Gallon (3.7 Liters)
- Do not refill tank while engine is running or hot.
- Close fuel cock before refueling with fuel.
- Be careful not to admit dust, dirt, water or other foreign objects into fuel.
- Do not fill above the top of the fuel filter or it may overflow when the fuel heats up later and expands.
- Keep away from open flames.



## CHECK ENGINE OIL

Remove side panel, then remove oil filler cap and check the engine oil level. Make sure the engine oil is at the upper level of the oil filler hole. Add oil as necessary.

- **WARNING:** The generator has been shipped without engine oil. Fill with oil or it will not start.
- Do not tilt the generator when adding engine oil. This could result in overfilling and damage to the engine
- If oil level is below the lower level line, refill with suitable oil to upper level line. Do not screw in the oil filler cap when checking oil level.
- Oil SAE 10W30
- Oil capacity: 25 oz.

## GROUND

Make sure to ground the generator.

## OPERATION

### STARTING THE ENGINE

- Before starting the engine, do not connect electric apparatus.

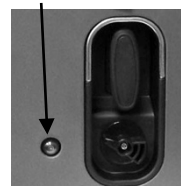
1. Turn the fuel cock lever to the “**ON**” position.
2. Turn the engine switch to the “**ON**” position.
3. Turn the choke lever to the “**CHOKE**” position.
4. PUMP the PRIMER button until the glass bowl is full.

5. Pull the recoil starter handle slowly until resistance is felt. This is the “Compression” point. Return the handle to its original position and pull swiftly. Do not fully pull out the rope. After starting, allow the starter handle to return to its original position while still holding the handle. Grasp the carrying handle firmly to prevent the generator from falling over when pulling the recoil starter.
6. Warm up the engine without a load for a few minutes.

FUEL COCK ON POSITION



PRIMER BUTTON



- Turn the choke lever back to RUN position then plug in appliances.

## USING ELECTRIC POWER

### AC APPLICATION

- Turn off the switch(es) of the electrical appliance(s) before connecting to the generator.
  - Insert the plug(s) of the electrical appliance(s) into the receptacle.
- Be sure the electric apparatus is turned off before plugging in.
  - Be sure the total load is within generator rated output.
  - Be sure the socket load current is within socket rated current.
  - The economy control switch must be turned to “**OFF**” when using electric devices that require a large starting current, such as a compressor or a submergible pump.

### DC APPLICATION

This usage is applicable to 12V battery charging.

Be sure the economy control switch is turned off while charging the battery.

### STOPPING THE ENGINE

- Turn off the power switch of the electric apparatus & disconnect electric devices.
- Turn the engine switch to “**STOP**” position.
- Turn the fuel cock lever to “**OFF**”.

## PERIODIC MAINTENANCE

### MAINTENANCE CHART

Regular maintenance is most important for the best performance and safe operation.

Item	Remarks	Preoperation check (daily)	Initial 1 months or 20 Hr	Every 3 months or 50 Hr	Every 6 months or 100 Hr	Every 12 months or 300 Hr
Spark Plug	Check condition adjust gap and clean. Replace if necessary.			●		
Engine Oil	Check oil level	●				
	Replace		●		●	
Oil filter	Clean oil filter				●	
Air Filter	Clean. Replace if necessary.			●		
Fuel Filter	Clean fuel cock filter. Replace if				●	



	necessary					
Choke	Check choke operation	●				
Valve Clearance	Check and adjust when engine is cold.					●
Fuel Line	Check fuel hose for crack or damage. Replace if necessary.	●				
Exhaust System	Check for leakage. Retighten or replace gasket if necessary	●				
	Check muffler screen. Clean/replace if necessary.					●
Carburetor	Check choke operation	●				
Cooling system	Check fan damage.					●
Starting system	Check recoil starter operation.	●				
Idle speed	Check and adjust engine idle speed					●
Fittings/ Fasteners	Check all fittings and fasteners correct if necessary.				●	
Crankcase breather	Check breather hose for cracks or damage. Replace if necessary					●
Generator	Check the pilot light comes on	●				

## ENGINE OIL REPLACEMENT

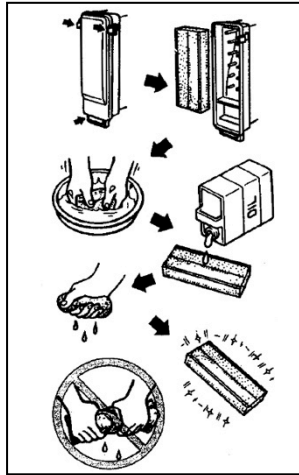
1. Place the machine on a level surface and warm up the engine for several minutes. Then stop the engine and turn the fuel cock knob to **"OFF"**. Turn the fuel tank cap air vent knob clockwise.
2. Loosen the screw and remove the cover.
3. Remove the oil filler cap
4. Place an oil pan under the engine.  
Tilt the generator to drain the oil completely
5. Replace the generator on a level surface.
6. Add engine oil to the upper level.
7. Install the oil filler cap
8. Install the cover and tighten the screw

- Engine Oil SAE 10W30 Capacity: 25 oz.
- Be sure no foreign material enters the crankcase.
- Do not tilt the generator when adding engine oil. This could result in overfilling and damage to the engine
- Clean the oil filter every other 100 hr.

### WASHABLE AIR FILTER

Maintaining an air cleaner in proper condition is very important. Dirt induced through inadequate elements damages and wears out engines. Keep the element always clean.

1. Remove the cover.
2. Remove the air filter cover and element.
3. Wash the element in solvent and dry.
4. Oil the element and squeeze out excess oil.
5. The element should be wet but not dripping.
6. Insert the element into the air filter.
7. Install the cover.

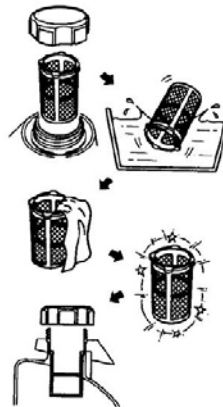


important. Dirt induced through inadequate elements damages and wears

The engine should never run without the Filter; excessive piston and/or cylinder wear may result.

### CLEANING AND ADJUSTING SPARK PLUG

1. Remove the cover.
  2. Check for discoloration and remove the carbon.
  3. Check the spark plug type and gap.
- Standard Spark Plug: A7RTC  
Spark Plug Gap: 0.6-0.7 mm (0.024-0.028 in)
4. Install the spark plug.
  5. Install the cover



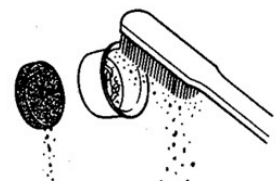
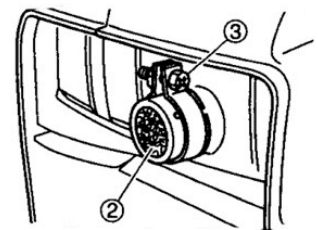
### FUEL TANK FILTER

1. Remove the fuel tank cap and filter.
  2. Clean the filter with solvent. If damaged, replace.
  3. Wipe the filter and insert it.
- Be sure the tank cap is tightened securely.

### MUFFLER SCREEN

- The engine and muffler will be very hot after the engine has been run.
- Avoid touching the engine and muffler while they are still hot with any part of your body or clothing during inspection or repair.

1. Remove the cover.
2. Remove the muffler screen.
3. Use the flathead screw driver to pry the spark arrester out from the muffler



4. Remove the carbon deposits on the muffler screen and spark arrester using a wire brush.
5. Install the muffler screen.
6. Install the cover

## **TROUBLE SHOOTING**

### **Engine won't start**

#### **1. Fuel systems**

No fuel supplied to combustion chamber.

- No fuel in tank.... Supply fuel.
- Clogged fuel line.... Clean fuel line.
- Clogged carburetor.... Clean carburetor.

### **Engine oil system Insufficient**

- Oil level is low.... Add engine oil.

#### **Electrical systems**

##### **Poor spark**

- Spark plug dirty with carbon or wet.... Remove carbon or wipe spark plug dry.
- Faulty ignition system.... Consult dealer.

### **Compression insufficient**

- Worn out piston and cylinder....Consult dealer.

### **Generator won't produce power**

Safety device (AC) to "OFF" ... Stop the engine, then restart.

Safety device (DC) to "OFF" ... Press to reset the DC protector

## **STORAGE**

Long term storage of your machine will require some preventive procedures to guard against deterioration.

### **1) DRAIN THE FUEL**

1. Remove the fuel tank cap, drain the fuel from the fuel tank
2. Remove the cover, drain fuel from the carburetor by loosening the drain screw.

### **2) ENGINE**

1. Remove the spark plug, pour in about one tablespoon of SAE 10W30 motor oil into the spark plug hole and reinstall spark plug.
2. Use the recoil starter to turn the engine over several times (with ignition off).
3. Pull the recoil starter until you feel compression. Stop pulling.
4. Clean exterior of the generator and apply a rust inhibitor. Store the generator in a dry, well-ventilated place, with the cover place over it.

5. The generator must remain in a vertical position.

MODEL		GEN2000i	
GENERATOR	Type	Inverter Generator	
	AC Voltage	60Hz	120V
	Max. Output		2.0 kW
	Rated Output		1.7 kW
	Power Factor	1.0	
	DC Output	12V/5.0A	
ENGINE	Model		XY152F-4
	Type	Air-cooled, 4 cycle, OHV, Gasoline Engine	
	Bore×Stroke mm×mm		52.4×46
	Displacement		99cc
	Max. Output		2.0KW / 4500rpm
	Fuel	Regular Automobile Gasoline	
	Fuel tank Capacity	1.0 Gallons (3.7 Liter)	
	Rated Continuous Operation		4.5 hours (50% Load)
	Lubricating oil	SAE 10W30	
	Lubricating oil Capacity	25 oz	
	Starting System	Recoil Starter	
	Ignition system	C.D.I	
	Spark Plug: Type	A5RTC	
DIMENSION	Net dimension L×W×H	525x282x457mm	
	Overall dimension L×W×H	575x335x510mm	
	Net Weight		18.5 Kg
	Dry Weight		22 Kg

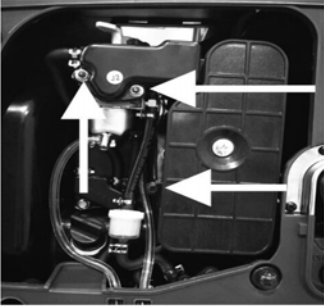
● Specifications subject to change without prior notice.

• High Altitude Use: This generator is not recommended for high altitude use above 3,000 feet.

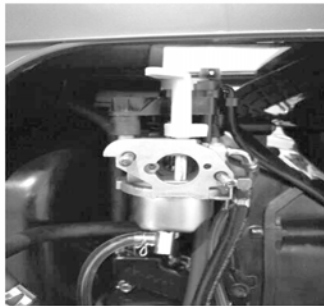
## STORAGE INSTRUCTIONS



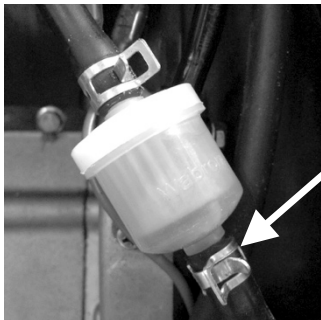
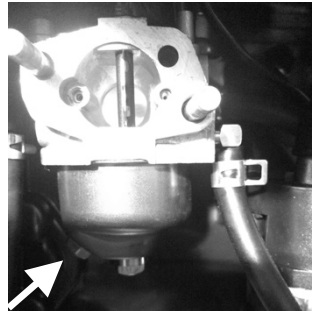
Rotate gas valve to "OFF" position.



Remove three screws from engine air box  
to locate carburetor.



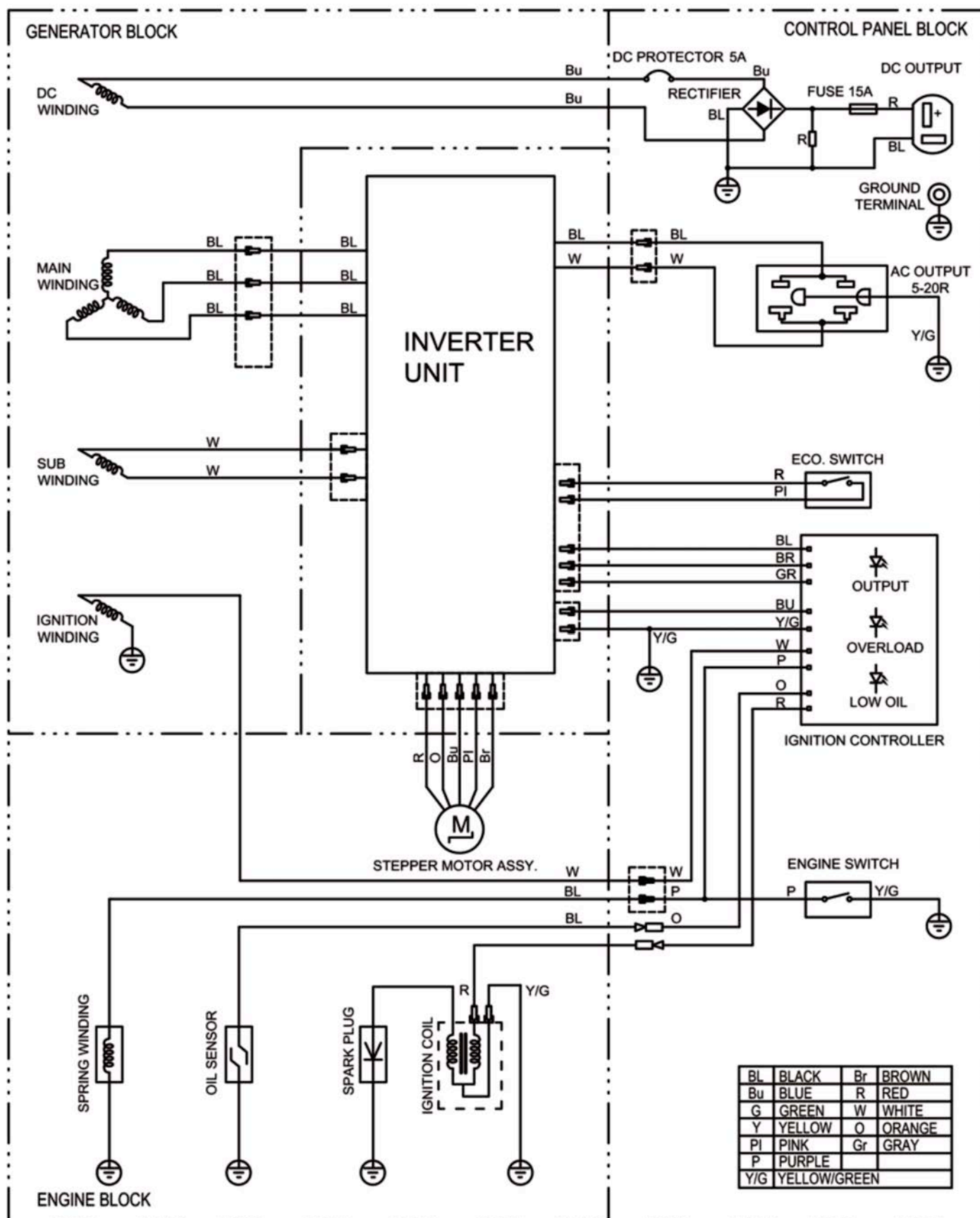
Remove drain screw  
from side of carburetor  
Fuel will begin to drain  
out of bowl



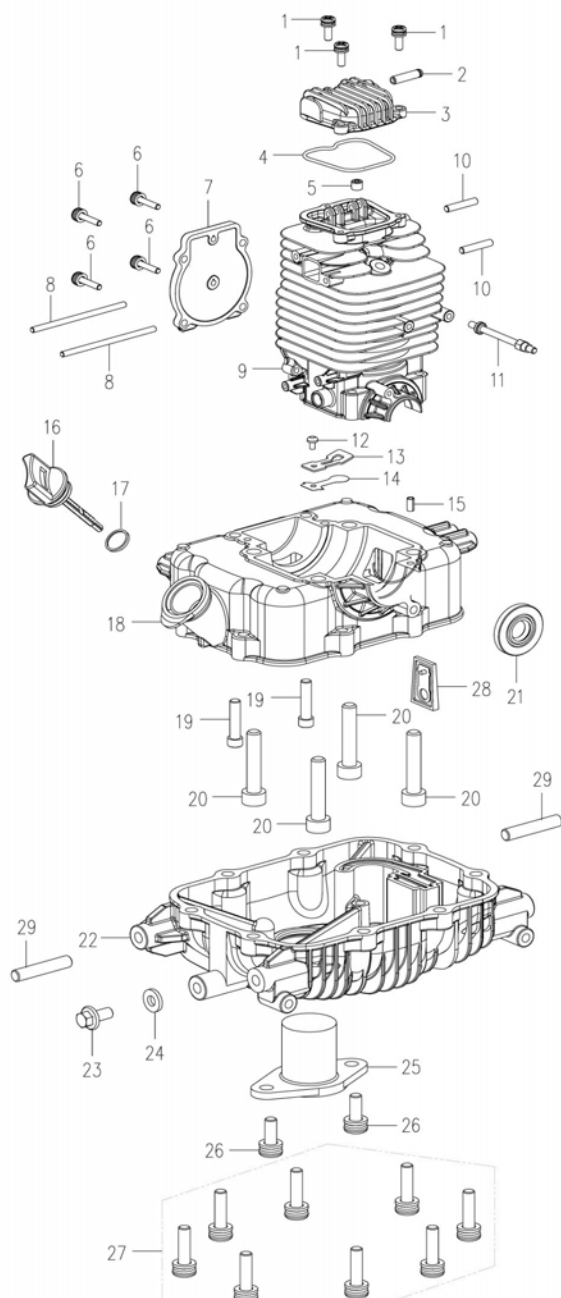
Remove fuel line  
from filter. Fuel will  
drain from both  
bowl and fuel line.

To remove remaining  
fuel from fuel line, open  
cap at top of generator.

# WIRING DIAGRAM

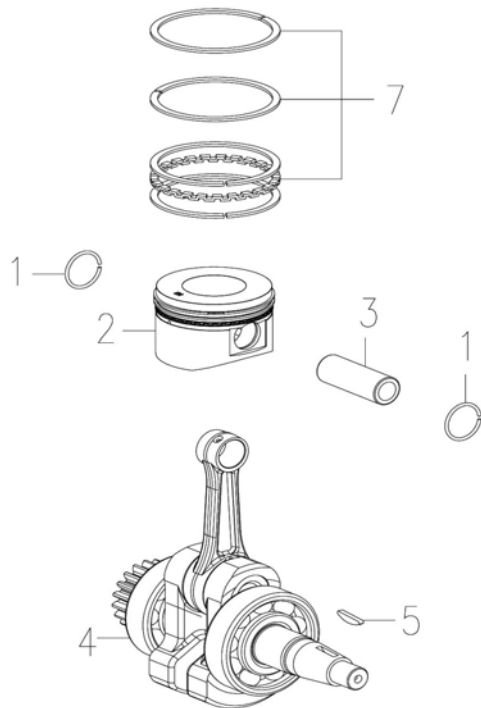


**FIG.A CRANKCASE ASSY**



No.	Part No.	Description
1	00033000601811	Screw M6×18
2	15420104002001	Ventilation Nozzle
3	15420104001001	Cylinder Head Cover
4	15420100002001	Cylinder Head Cover Seal
5	15420101001001	Valve Oil Seal
6	00033000602011	Screw M5×20
7	15420100003101	Cam Chamber Cover
8	14300202003101	Dual-Head Bolts M5×100
9	15420101100101	Upper Crankcase
10	00074000603211	Dual-Head Bolts M6×32
11	15420100006001	Dual-Head Bolts M5×76
12	00220000300501	Countersunk Head Screw M3×5
13	14760501001001	Limiting Board
14	15420102002001	Valve Plate
15	00510000400801	Dowel Pin 4×8
16	15560101201002	Oil Gauge
17	15560101202051	O ring 19×3.55
18	15420102001001	Lower Crankcase
19	12700100012031	Inner Hexagon ScrewGB/T70.1 M6×25
20	00204000805501	Inner Hexagon ScrewGB/T70.1 M8×55
21	15420100007001	Oil Seal 21×32×5
22	15420103001001	Oil Pan
23	00031000601212	Hexagon Flange Bolt M6×12
24	14760103002031	Aluminium Gasket 6×13×2
25	14760103100002	Oil Lever Sensor
26	00252000601811	Screw M6×18
27	00033000602511	Dual-Head Bolts M6×36
28	14760501000001	One-Way Valve Components
29	00074000603211	stud M6×36

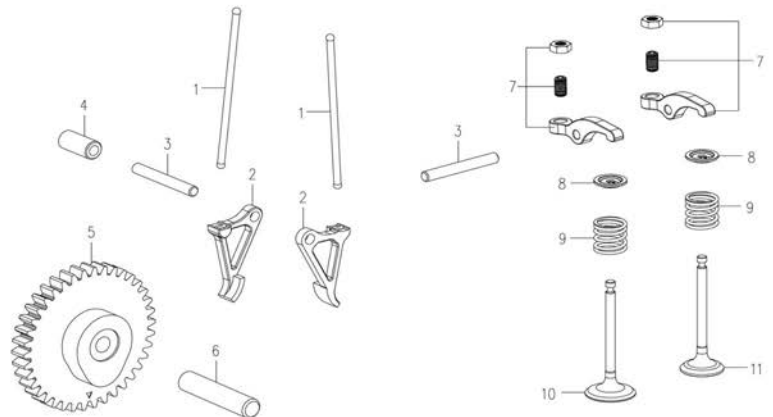
**FIG B. CRANKSHAFT PISTON**



No.	Part No.	Description
1	12210300001004	Piston Pin Clip
2	12210301001005	Piston
3	12210300002004	Piston Pin
4	15420301000001	Connecting Rod
5	15560300001001	Woodruff Key
6	12210301006001	Piston Ring

**FIG C. CAMSHAFT**

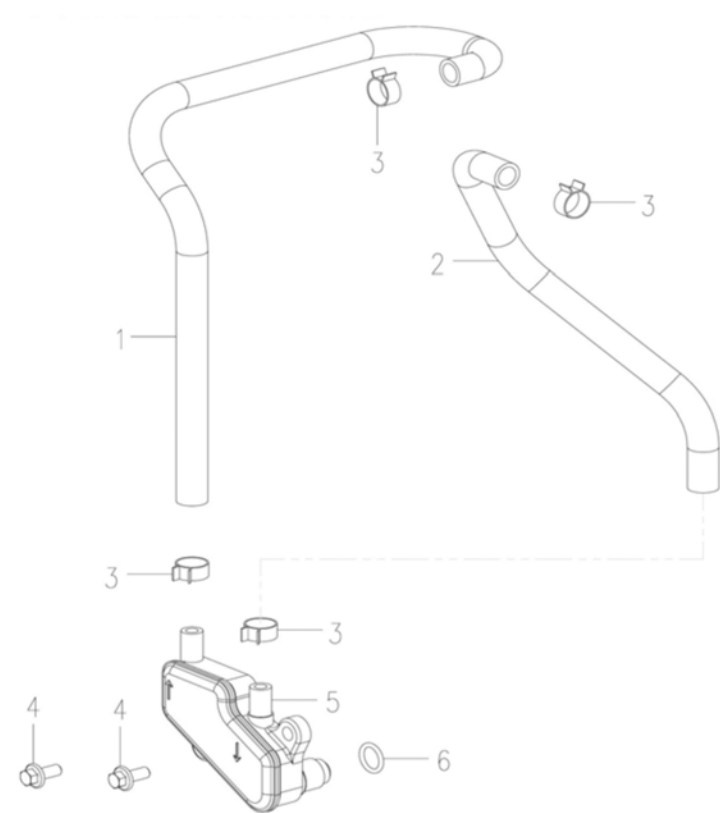
No.	Part No.	Description
1	15420400007002	Push Rod
2	15420400006002	Tappet
3	005040000603902	Pin 7 g6×39
4	15420400008001	Rocker Bush
5	15420401100101	cam combination
	14610401001001	Decompression of the pin
	14610401002002	Torsional spring
	15420401001101	Cover for cam
6	15420400009003	Camshaft
7	15420400005002	Upper Rocker
8	14610400004002	Valve Spring Seat
9	15420400003001	Valve Spring
10	15420400001001	Intake Valve
11	15420400002001	Exhaust Valve





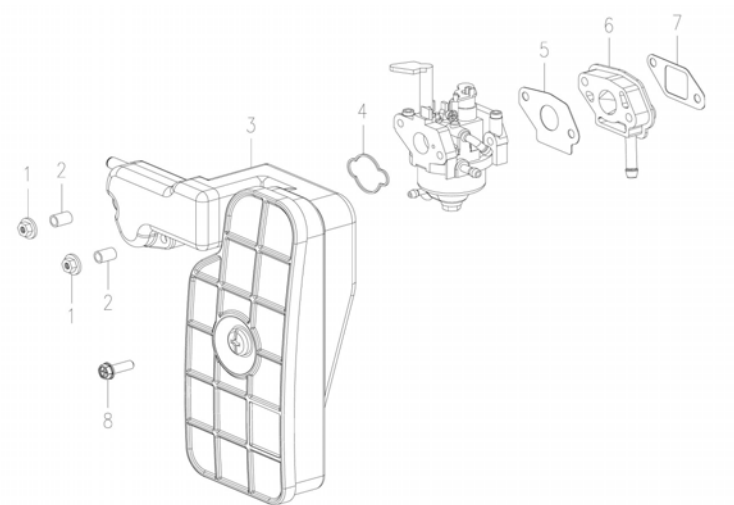
**FIG D.LUBRICATION SYSTEM**

No.	Part No.	Description
1	15420500001001	Long Vent Hose
2	15420500002001	Short Vent Hose
3	14760500005001	Hose Clamp
4	00031000501611	Hexagon Flange Bolt M5×16
5	14760502000101	Vent
6	14760500004003	O Ring



**FIG E. AIR CLEANER**

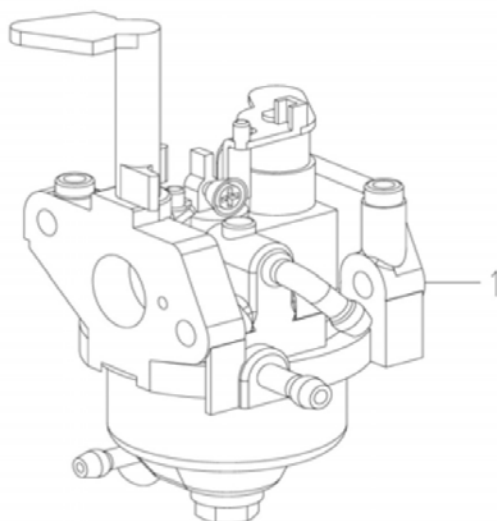
No.	Part No.	Description
1	00129000500011	Hexagon Flange Bolts M5
2	15420801005001	Air Cleaner Bush
3	15420801001001	Air Cleaner Assy.
	15420801004001	Cover of Air Cleaner Assy.
	15420801003001	Foam/sponge
	00031000601212	Inner Hexagon Screw M6×12
4	15600800004001	Air Cleaner Gasket
5	15600800003002	Carburetor Gasket
6	15420802000001	Insulation Board Components
7	15420800001012	Insulation Gasket
8	00427014801641	Tap Screw ST4.8×16-F.H



## FIG.F CARBURETOR

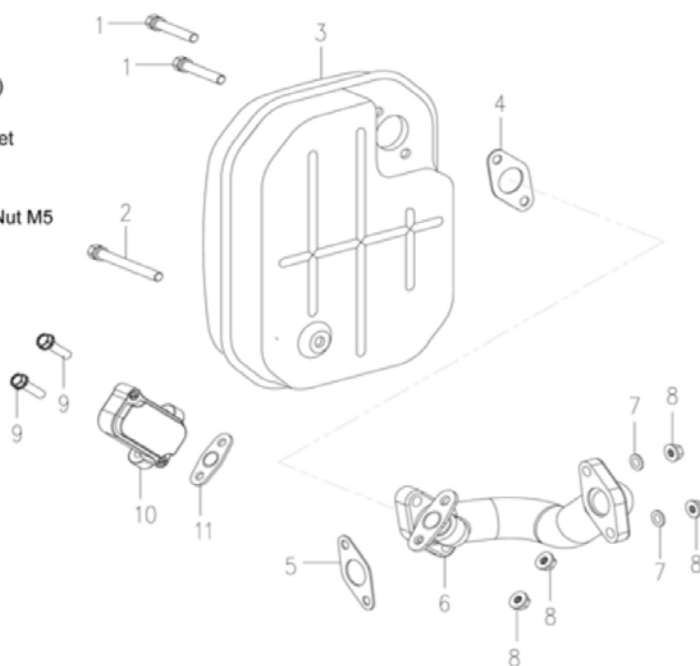
No. Part No.

1 15420900000001

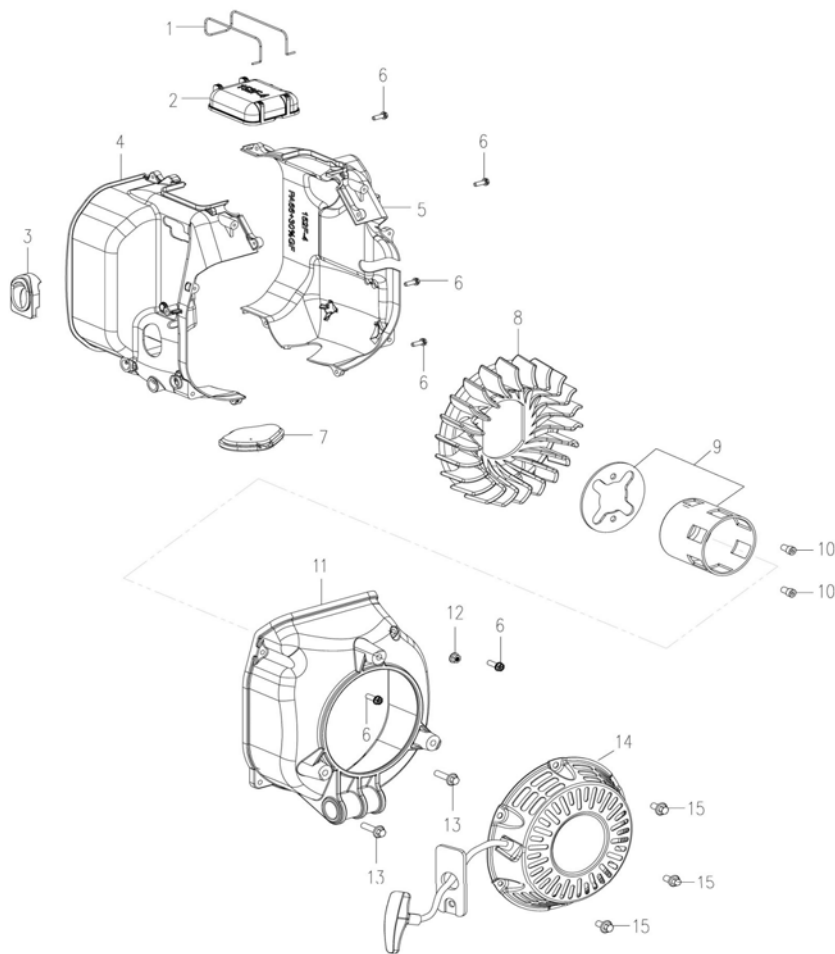


## FIG H. MUFFLER (EPA)

No.	Part No.	Description
1	00722000605011	Bolt M6×50
2	00722000608011	Bolt M6×80
3	15420701001001	Muffler Assy.(EPA)
4	15420700003012	Muffler Gasket
5	15420700001012	Muffler Pipe Gasket
6	15420700002101	Muffler Pipe
7	00300000600012	Washer 6
8	00141000600011	Hexagon Flange Nut M5
9	00033000602011	Bolt M6×20
10	15420702001001	Booster valve
11	15420702001101	Gasket

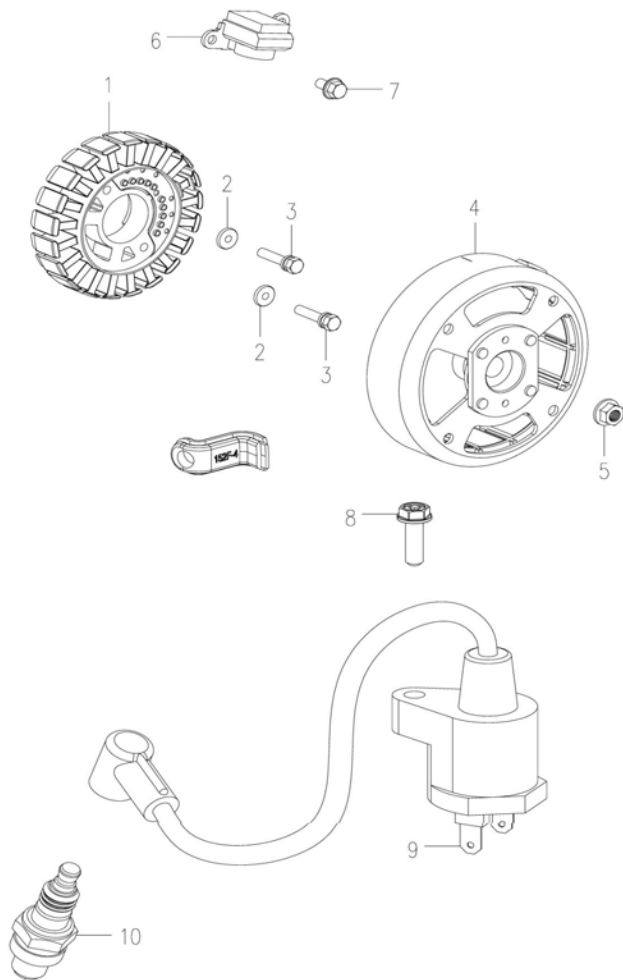


**FIG G. RECOIL STARTER**



No.	Part No.	Description
1	15421100007001	Wire Clip
2	15421100004001	Cylinder Head Cover Shroud
3	15421100005001	Oil Filler Hole Airproof Pad
4	15421100002001	Air Guide Sleeve A
5	15421100003001	Air Guide Sleeve B
6	00427014801641	Tap Screw ST4.8×16-F.H
7	15421100006001	Rubber Cover
8	15561100001001	Cooling Fan
9	15420601001001	Starting Hub
10	00033000601211	Inner Hexagon Screw M6×12
11	15421100001001	Fan Shroud
12	00129000500011	Hexagon Flange Nut M5
13	00033000502211	Hexagon Flange Bolts M5×25
14	15560602000002	Recoil Starter Parts
	15560602001101	Handle
	15560602003001	Fender
15	00033000601211	Hexagon Flange Bolts M6×12

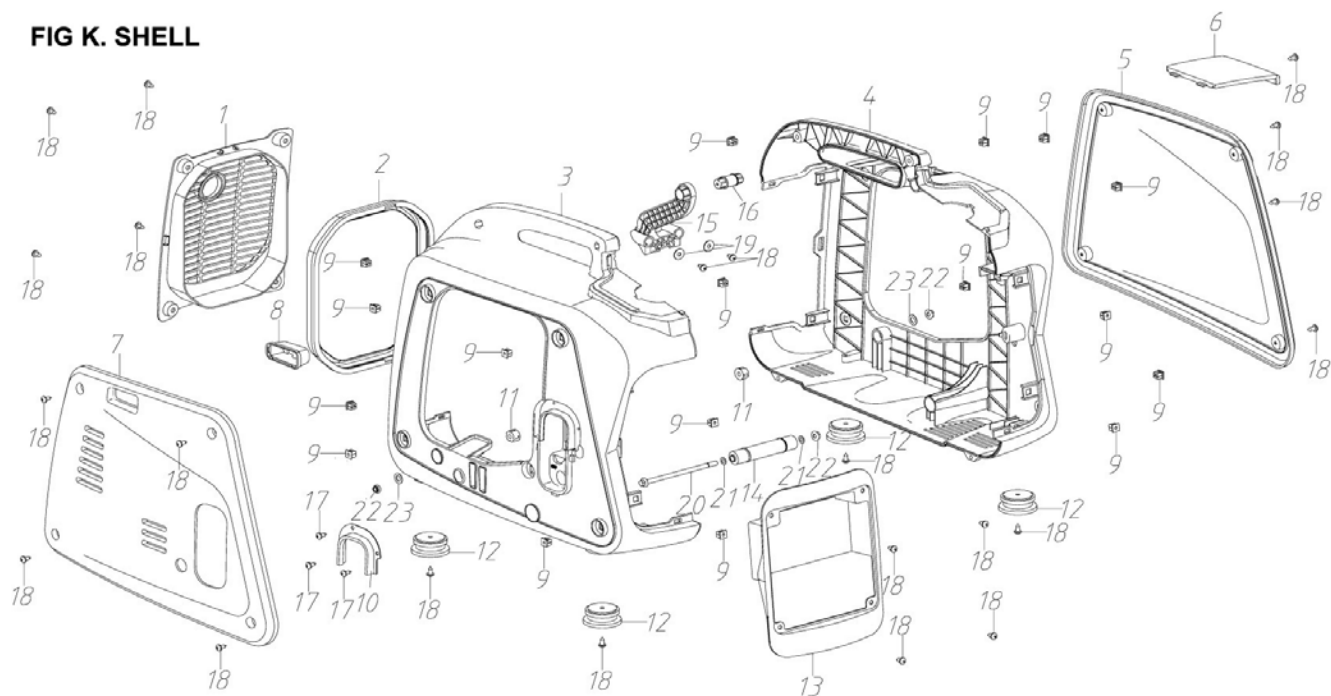
**FIG I. GENERATOR**



No.	Part No.	Description
1	15421001100101	Stator 1.7KW 230V 580Hz
	15421000002001	Bushing
2	00030000500041	Washer 5
3	00722000503011	Hexagon Flange Bolts M5×30
4	15421001200101	Rotor
5	00129021212511	Hexagon Flange Nut M12×1.25
6	15421000003001	Trigger
7	00033000501221	Hexagon Flange Bolts M5×12
8	00241004802541	Tap Screw ST4.8×25-F.H
9	14611003000001	Ignition Coil
10	14701002000001	Spark Plug A5RTC
11	14761000003001	Ignition Coil Cap Seal

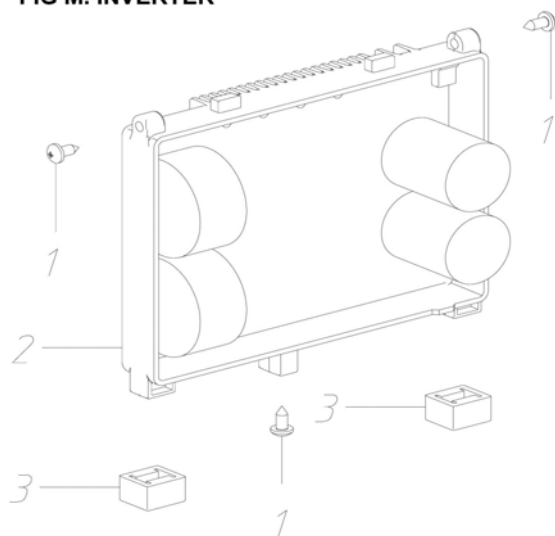


**FIG K. SHELL**



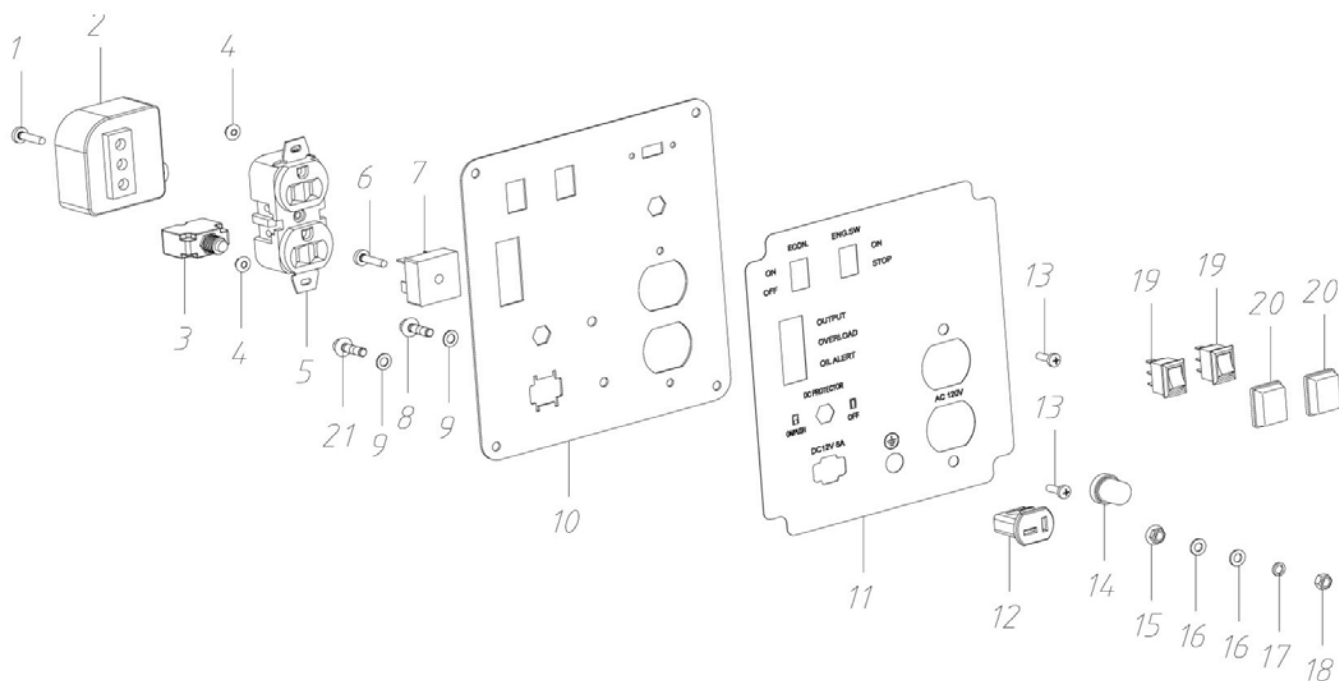
No.	Part No.	Description	No.	Part No.	Description
1	461603000090	Muffler Cover	13	461603000070	Panel Box
2	461603000100	Muffler Cover Seal	14	461603020000	Rubber Shock Absorber long
3	461603000040	Right Cover of Shell	15	461603000060	Engine Holder
4	461603000010	Left Cover of Shell	16	461603010000	Rubber Shock Absorber short
5	461603000020	Left Side Cover	17	004210348095	Tap Screw GB/T845 ST4.8×9.5-F
6	461603000030	Upper Cover	18	004210148013	Tap Screw GB/T845 ST4.8×13-F
7	461603000050	Right Side Cover	19	003040005001	GasketGB/T96 φ5
8	461603000110	Rubber of Choke	20	000310006120	Hexagon Flange Bolt M6×120
9	460703000110	Fastener	21	003040006001	GasketGB/T96 φ6
10	461203000060	Edge Protection	22	001410006001	Flange Lock Nut GB/T6187 M6
11	460703000120	Rubber Pad Φ6×Φ16×10	23	460703000130	Rubber Pad Φ6.5×Φ16×2
12	461603030000	Vibration Absorber			

**FIG M. INVERTER**



No.	Part No.	Description
1	007090005012	Screw GB/T9074.4 M5×12
2	461619010000	Inverter 1.7kw 120V 60HZ
	461619010000	Inverter 1.7kw 100V 50/60HZ
3	462419000010	Inverter Gasket

**FIG N. CONTROL PANEL (FOR USA)**



No.	Part No.	Description
1	007090005016	Cross Pan Head Screw M5×16
2	462417016000	Ignition Controller
3	480107880060	Overload Protector 6A
4	001280004001	Hexagon Flange Nut M4
5	480101020010	American Socket 5-20R
6	007080005016	Cross Pan Head Screw M5×16
7	480110350200	Rectifier KBPC3502
8	000330005016	Flange Bolt GB/16674 M5×16
9	003210005001	Lock Gasket GB862.2 φ5
10	461617021000	Panel Components
11	461688000040	Panel Sticker

No.	Part No.	Description
12	480101090030	DC Charging Socket
13	007090004012	Screw M4×12
14	480107000020	Water-Proof Cap of Overload Protector
15	001280005001	Flange Nut GB/T6177 M5
16	003020005001	Flat Washer GB/T97 φ5
17	003000005001	Spring Washer GB/T93 φ5
18	001200005001	Hexagon Nut GB/T6170 M5
19	480105010010	Boat Switch
20	480105090010	Water-Proof Cap of Boat Switch
21	007090005008	Screw M5×8
	461617020000	Control panel